

espconnection

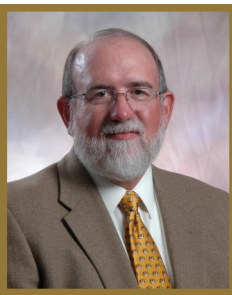
Number CXX

The Newsletter of Epsilon Sigma Phi

May/June 2013

Galaxy IV Bridging the Centuries - a New Era for Extension

Mark Stillwell, National ESP President



Every five years, the Joint Council of Extension Professionals (JCEP) hold a National Meeting and Professional Improvement Conference for all of

its' member Extension Professional organizations, known as Galaxy. This conference invites participation from all JCEP organizations, ECOP and other partners critical to the Extension mission. Participants will represent the six Extension professional organization members of JCEP: ESP, NAE4-HA, NEAFCS, ANREP, NACAA, and NACDEP. The Galaxy Conference provides a unique opportunity to work together on a joint conference while celebrating the diversity of the individual organizations.

Galaxy IV will be held September 16-20 in Pittsburgh, PA. Don't miss this opportunity to connect with 2,000 or more Extension professionals from all specialty areas of our nation's land-grant university Extension system. There are more than 300 educational presentations to meet your professional development needs. There are also committee meetings, professional development tours, keynote speakers, exhibitors' booths, JCEP night at the Pittsburgh Pirates baseball game, and of course, the ESP Ruby Lecture.

Keynote speaker Dr. Lowell Catlett, Regents Professor in Agricultural and Extension Economics at New Mexico State University, is an exciting futurist whose knowledge of technologies and their implications on the way we will live and work is addressed in his varied and upbeat presentations.



Registration is now open - Early Bird registration is \$450 and will be available through July 15. Regular Registration is through August 15 and is \$495, and the Late Registration price is \$550. So register soon to take advantage of the Early Bird fee! Click [here](#) to register.

I look forward to seeing you in Pittsburgh!

Mark Stillwell can be reached by email at stillwellm@missouri.edu.

Inside this issue:

Professional Development for Extension and our Clients	2
A Note From the Membership Recruitment & Retention Committee	2
Scholarships, Grants & Recognition News	3
Global Relations Committee News	3
Alpha Lambda Chapter/Indiana Reports on Mini-Grant, "Ethics and Our Role as Leaders"	4
Why I Joined ESP and Service Recognition Awards 101	4
New Rotation of Regional Vice Presidents	5
2013 PILD—What You CAN Do—Overview	6
Don't Pass Up an Opportunity...	7
Why Become a Life Member of ESP?	7
Important Dates Ahead	8

It's Time to Register for Galaxy IV!

Bob Ohlensehlen, ESP Executive Director

It is time to register for Galaxy IV. If you have access to internet simply go to the Galaxy IV link <http://www.galaxy-2013.org> to register. There were 400 registrations that were received in the first week. Remember that the Early Bird registration rate of \$450 will be available until July 15, so register early. Early registration is your best bet of getting a room at the conference hotel. Hotel reservations are done as a part of registration.

Remember, if you are attending the conference as a member of multiple organizations you need to include ESP on your registration.

(Registration Continued on page 8)

Professional Development for Extension and our Clients

Beth Raney, Professional Development Committee Member

Wondering where you can find the latest in cutting-edge professional development brought to you by your colleagues across the entire Cooperative Extension System? Look no further than **Learn** (Learn.extension.org) - filled with real-time and online, research-based learning opportunities open to anyone. You are welcome to participate! Partake in the highest quality of professional development offered from the comfort of your favorite online device. It couldn't be easier. Learn together with colleagues from across Cooperative Extension.

Here's what Learn can do for you

See a list of upcoming events just a few days away or, click on *View All* to get a listing by date of all learning opportunities that have been added with the title, description, and the date and time. Click on any title to see an event page. If you know of web-based sessions that are not currently listed, please add them. Want to see what you might have missed? *Recent Sessions* features learning opportunities whose start time has passed with the title, description, and the date and time. If you see a green triangle button, a recording is available.

Each learning event's page in **Learn** includes a detailed description of the session, presenters, time (and time zone), tags, as well as a link to where the session will be held online. Also important are the check-boxes to click for *Follow this event*, *Attended*, and *Watched Recording*. Checking the appropriate box lets the presenter and others know of your interest or attendance, and subsequently allows those to be added to your Activity. You'll see an avatar for each person who has connected with (followed, attended, watched) an event so you can see those with potentially similar interests. As each event begins, sensemaking questions appear below the event description. Respond to these regarding this specific event, and to prompt thinking/sensemaking about the learning in the session. These questions may prompt

you to *Add your thoughts...* so that other participants can learn with you.

Learn helps you share your professional development with others!

Extend your reach to your Extension colleagues and the public by conducting your own online professional development sessions. Include your events on **Learn** by signing in with your eXtension, Twitter, Facebook or Google account, then click *Create a new event*, and fill in the fields available. Topics you might want to share can be anything that professionals in Extension or your clientele might find of interest... subject matter updates, emerging topics, information sharing, new ways of working, new technologies, collaboration, and engagement. In addition you can track your online presentations for reporting and evaluation.

Learn helps you keep track of your learning!

When you see an event of interest, sign in and click *Follow this event*. This may be a session that fits into your interests or professional development plan, and for which, even if you are unable to attend, you may want to watch the recording if available later. This will let the presenter know that you're interest in the topic, and you will be automatically reminded minutes before the event is scheduled to take place. After attending an event you can check *Attended*. This does two things - it keeps a permanent record of your learning for reporting purposes, and it also indicates the type of sessions in which you have an interest. If there are similar sessions coming up in **Learn** you may receive a weekly recommendation so that you'll never miss an upcoming session.

It is important to keep your profile in **Learn** updated. You can edit your profile by signing in and click the *Settings* tab. Add a bio,

(Learn Continued on page 5)

A Note From the Membership Recruitment & Retention Committee

Stacey Warner, MRR Committee Member and Alpha Rho Chapter Member

Several years ago a national ESP committee developed a definition of an Extension professional. (click here for [What is An Extension Professional?](#)) One element of that definition was that a professional is "nationally engaged with educational presentations, research and professional development."

Galaxy Conference is one of those opportunities to be engaged nationally with your peer Extension professionals from across the country. It will be held

September 16 to 20, 2014, in Pittsburgh, Pennsylvania. If you aren't familiar with Galaxy it is a conference held every five years. Attendees are members of all the Extension professional associations plus other Extension system partners.

During my career I've attended a number of Extension professional meetings. I have found that Galaxy is unique in that I have the opportunity to take off my "subject matter expertise" hat and get into my broader "Extension professional" mindset.

When we gather as Extension professionals at Galaxy we focus on our commonalities and minimize our programming differences.

The Membership Recruitment and Retention Committee would like to encourage you to include Galaxy in your professional development plans. Register at <http://www.galaxy-2013.org>

Stacey Warner can be reached by email at swarner@ksu.edu.

Scholarships, Grants & Recognition News

Graham Cochran, Chairman of Scholarship, Grants, and Recognition (SGR) Committee and Alpha Eta Chapter Member

The Epsilon Sigma Phi mission is about professional development for the Extension system and each of you who is an important part of your state's Extension work. Providing scholarships and grants is one way ESP supports professional development. We recently awarded four **Richard R. Angus Professional Development Scholarships** to members.

The scholarship recognizes Dick Angus who devoted 45 years of his life to the Extension Service in Minnesota and Maryland along with state and national leadership in ESP. Epsilon Sigma Phi, through the ESP Development Fund, provides \$2,000 annually to fund scholarships not to exceed \$500 per member to encourage, stimulate, and support professional development through participation in courses, seminars, conferences or workshops.



Visit the ESP website at
www.espnational.org

Congratulations to the following members for their awards. We look forward to hearing in a future **ESP Connection** about their learning experiences.

- Donna Green - Ohio / Alpha Eta (Attend a NeighborWorks training institute to become certified to present home buyer education)
- Elaine Courtney - Florida / Alpha Delta (Attend the Association for Financial Counseling, Planning and Education 2013 Conference and support Florida's Economic Well Being Initiative)
- Nav Ghimire - Wisconsin Alpha / Sigma (Present a paper and attend the 2013 Association of International Agricultural and Extension Education Conference)
- Stephen Beck - Oklahoma / Omicron (Wilderness First Responder training to support 4-H outdoor education)



Graham Cochran can be reached by email at cochran.99@osu.edu.

Global Relations Committee News

Nancy Kadwill, Chairman of Global Relations Committee



The committee is looking forward to Galaxy and all the wonderful professional improvement seminars and other opportunities that will be available there. If you have an interest in international work, be sure to stop by the ESP Board booth and visit our display. We hope to have a world map there with the chance for you to indicate where you have worked (or will be working) and your contact data so others who are interested can get in touch with you to plan, share ideas, and strengthen programming where feasible. Be sure to attend our committee seminar which is slated for Tuesday afternoon (4:00-5:00 pm). It will feature several key Extension administrators who

will share their vision and support for international Extension work.

Paul Lachapelle is active on the Globalizing and Internationalizing eXtension CoP. Mary Simon Leuci reported that the NIFA survey on the value and impact of international Extension programs is on hold pending what the CoP group decides to do. We will all help each other rather than duplicate efforts.

Paul compiled the results of the ESP Global Relations state chapters' survey and they have been posted on the ESP website. Please check it out. Hopefully this will give chapter chairs some ideas for their own states to use.

Mark Platten and Paul Lachapelle were featured in an ANREP webinar on globalizing Extension. Mary Simon Leuci also stated that her state ESP chapter is

producing professional development webinars for their staff on the same topic. If these go well they may be recorded and shared at a later date. What a great idea for state chapters to do back in their respective states!

We plan to have a basket (or two) of international items again for the auction at Galaxy. If you have traveled and wish to donate an article that represents another country or culture, please let me know at nmk1@psu.edu.

We still need two national committee members (preferably from the NE but at this point they can be from any region). We are a dedicated and enjoyable group and would like to have you share your interests and talents with us.

Nancy Kadwill can be reached by email at nkadwill2@gmail.com.

Alpha Lambda Chapter/Indiana Reports on Mini-Grant, "Ethics and Our Role as Leaders"

Susan Plassmeier, Alpha Lambda Chapter Past President

The Indiana Alpha Lambda Chapter of ESP received a National ESP Mini Grant to learn more about how ethics play a critical role in our leadership within organizations. At the Purdue Extension Professional Development Conference in November of 2012, Dr. Jeff King, from The Ohio State University Leadership Center, presented a 4-hour workshop on ethics. This workshop began with helping participants create an understanding of the basis for a strong ethical leadership foundation, identifying behaviors that get people off track and introduced strategies to effectively deal with those day-to-day ethical decisions we face. Presentations and small group activities helped reinforce the information presented.

Participants gained useful knowledge, skills and activities they were able to take back and implement in their communities to help their boards/councils to understand the important role ethics play within the Extension program. Dr. King is to provide a PowerPoint and curriculum that Extension Educators can use in their counties to facilitate their presentation. A follow-up evaluation is to be conducted with Extension Educators and the boards they provide training for to determine the impact the program material has had on the local program.



Dr. Jeff King, from The Ohio State University Leadership Center, presented a workshop on "Ethics and our Role as Leaders."



Dr. King involved Extension Educators in the discussion about ethics.

Susan Plassmeier can be reached by email at splassme@purdue.edu.

Why I Joined ESP and Service Recognition Awards 101

Beth Claypoole, Member of SGR Committee and Lambda Chapter Member

All of us join ESP for different reasons. I know that I wanted to join an organization that looks at Cooperative Extension as a whole and provides professional development opportunities to become a better Extension educator, overall. ESP has also provided me the opportunity to learn more about the organization by being a regional director and working with the PLD and Scholarship, Grants, and Recognition committees. As I have learned more about Scholarships, Grants and Recognition, it is amazing to me how few people actually take advantage of some of these opportunities (including me!). Read on and think about how you can apply, or encourage others to apply. The recognition awards add to our menu of "catching people doing something right" arsenal and provide a little incentive to "keep going" and provide advancement in your Extension career. For those who also have scholarship and recognition as part of your evaluation portfolio, this also provides great resume builders! Beth

One of the benefits of membership in ESP is professional recognition. ESP provides

several opportunities for individuals to nominate themselves or colleagues for awards. One set of awards is for career recognition, based on years of service, that acknowledge and pay the tribute to the experienced Extension professionals who consistently exhibited leadership and excellence in Extension program planning, delivery, evaluation, in program and/or administration, or has exhibited future potential to excel in their profession. **The Early Career Award** is for those professionals with less than 10 years of experience in Extension. **The Mid-Career Award** is for over 10 years and less than 20 years. **The Distinguished Service Award** is for those with more than 20 years of service. All of these awards can be awarded at the local/state level and the regional/national level.

Applications are available online at the ESP website. The online applications can be used for the state award, but that is up

to the individual state. State award winners are then eligible for regional and national recognition. An online application for these awards is required. Applications include information on scholarship and performance of the applicant. Data supporting measurable impacts of the candidate's work in meeting needs of clientele will strengthen the nomination.

All forms can be found on the ESP website under "Applications/Reports" and then the "Recognition" tab. You will find a Chapter form which can be used for the chapter awards, and then it is also used for the national award. The National Recognition Form must also be completed for each application. Keep in mind that the applications have limits for spacing, so please make sure to double check the online applications to make sure that the word limit is met. Applications that do not follow directions will be eliminated.

(Why Continued on page 6)

New Rotation of Regional Vice Presidents

Patricia Dawson, Western Region VP and Chair of the Public Issues Committee

During the ESP 2013 Mid-Year Board meeting the Board discussed the need to stagger the terms of our Regional Vice Presidents so that ESP does not have an entire new slate of Vice Presidents/Committee Chairs every two years as is currently done. After extensive discussion the decision was made to adopt a new rotation system as described below which goes into effect immediately.

Process: Two Regional VPs will be elected each year. ESP will elect W and NE Regional Vice Presidents in odd years and NC and S in even years. To bridge the gap, the National Board intends to extend the current term to 3 years (2014) for the current West and Northeast Region Vice Presidents. The Board will appoint an individual to serve the third year should either of the current W or NE VP's be unable to extend their respective term.

Timeline: The election of Regional Vice Presidents will follow the same rotation as the 2nd Vice President election process for the respective region. This will allow the Regional Vice President term to end at the same time that their region is responsible for election of the 2nd Vice President.

Rationale: A staggered term process will insure continuity and strengthen ESP operations. With the current model the four Regional Vice Presidents are all elected on even years. This results in five of the 8 National Board members/committee chairs replaced every two years. Staggered timelines will allow for operational continuity and provide board mentorships resulting in a stronger, more efficient ESP National Board.

With the present system, Regional Vice Presidents must resign from their position if elected to the 2nd Vice President while in office or wait three years before the opportunity opens again to run for 2nd Vice President. In the past four years, two of our Regional Vice Presidents made the choice to serve one year of their RVP term before running for 2nd VP. Granted, not every Regional VP will desire to run for 2nd Vice President, and granted, serving as Regional Vice President does not automatically mean that an individual would be elected to serve as 2nd Vice President...however, the staggered process would eliminate transition issues currently faced by our Association.

Patricia Dawson can be reached by email at patricia.dawson@oregonstate.edu.

Region	2013	2014	2015	2016	2017	2018	2019	2020	2021
W	2nd VP	Extend term	RVP		2nd VP RVP		RVP		2ndVP RVP
NC		2nd VP RVP		RVP		2nd VP RVP		RVP	
NE		Extend term	2nd VP RVP		RVP		2nd VP RVP		RVP
S		RVP		2nd VP RVP		RVP		2ndVP RVP	

(Learn Continued from Page 2)

upload a photo/avatar of yourself, and your cell number if you'd like to get a text notification about an event you're following.

Let Learn be YOUR professional development tool!

Action Steps

- Go to **Learn** at Learn.extension.org and look for web-based learning opportunities of interest and value to you. Sign in (with your eXtension, Google,

Facebook or Twitter account) and click *Follow this event*. Add them to your calendar to participate or watch recordings.

- Share with colleagues when you see session topics you think may have interest/value to them. Each event's page has a unique URL to allow easy sharing. Encourage others to use **Learn** as a resource.
- When you participate in a session, click *Attended*. Click *Watched Recording* when you do.
- Answer the sensemaking questions,

and *Add your thoughts...* on an event page.

- Add online learning opportunities that are open to others at **Learn** by clicking *Create a new event*.
- Use the unique URL provided for each session to share via social media where you post.
- Update your profile with your cell number and notification settings to get reminders.

Beth Raney can be reached by email at bnr1@psu.edu.

2013 PILD—What You CAN Do—Overview

Karen Vines, Public Issues Committee Member & Alpha Omicron/Pennsylvania Chapter Member

The JCEP-PILD conference provided a great opportunity to receive updates on what is happening with legislation at the federal level as well as learning from colleagues what is occurring across the states. Dr. Sonny Ramaswamy, director of USDA-NIFA, opened with the 3 guiding principles for the agency related to the 2014 federal budget. These are 1) continue to increase the competitive grants program, 2) support capacity funding, and 3) protect the 1890 institutions. He specifically talked about the Critical Agricultural Research & Education (CARE) program being used to support production agriculture. These have a quicker (1-3 years) return on investment than NIFA as a whole (5-10 years). Within USDA there is emphasis on increased collaboration among agencies, especially in STEM. He emphasized the opportunity provided by USDA through their reach to 80 million of the nation's children through 4-H, FFA, EFNEP, SNAP-Ed, School breakfast and lunch programs. He emphasized the need for providing consumers with education related to the source of food and encouraged the resurrection of home economics education. Movement of Ag in the Classroom projects will provide access to this program for all children, aiding in improving agricultural literacy.

Dr. Daryl Buchholz, the Associate Director of Extension and Applied Research at Kansas State University and a member of the Extension Committee on Organization and Policy (ECOP), talked about Extension's primary responsibility in translating scientific information to clientele, engaging them in programs and keeping them informed on critical issues. He also provided a good overview of ECOP and introduced many members in the audience.

Laura Kalambokidis, Ag Economist from the University of Minnesota, spoke about the importance of taking a public benefits approach in program planning and reporting to appeal to non-participant funders. This can be accomplished by incorporating public value goals in program objectives. Collaboration among states is encouraged to take advantage of the universality of this type of reporting. She recommended the Building Extension's Public Value blog (<http://blog.lib.umn.edu/kalam002/publicvalue/>) as a place to read and interact with others on the topic. Marshall Stewart, Associate Director, Department Head and State Program Leader for 4-H Youth Development/Family and Consumer Sciences at North Carolina State University, emphasized the difference between advocacy and lobbying. He encouraged development of elevator (25-30 seconds) and stump (3 minutes of power) speeches to quickly communicate the role of Extension and Extension programs

when possible. He emphasized the importance of communicating with and protecting superiors. He also mentioned the importance for developing networks of identifying the "Tables of Knowledge" that often exist in local coffee shops. Marshall also encouraged the audience to "Figure out what direction the parade is going and get in front of it, so you can turn it your way." Finally, in interactions with legislators it is important to think of things from their perspective so you can explain your issue in a context that also makes it their issue. He also encouraged participants to follow-up with twelve contact and seven thank yous.

A panel from Texas, comprised of Doug Steele (Extension Director), Brandon McBryde (federal staffer) and Dustin Bryant (Assistant Director for Federal Relations at Texas A&M) discussed effective advocacy from their unique perspectives. They reminded the audience in developing relationships to put the emphasis on the relationship and not on "stuff," keep information relevant and on topic and make your interaction personal. After interacting at the federal level, they recommend following up in the legislative office at the local level.

PILD included breakout sessions intended to provide education on networking and advocacy and to prepare states for their visits to the Capitol. The sessions I attended were very well done and provided me with ideas on how I might be a better advocate and advise others to do the same. The breakfast sessions with the NIFA program leaders provided a great opportunity to gain greater insight into what they perceive as challenges and opportunities for programs from the federal level.

This was my second opportunity to attend this conference and I found the training provided to be of a very high quality with tremendous application for advocacy efforts not only at the federal level, but also at the local level. And as always, the opportunity to network with Extension personnel from across the country was priceless. I continue to be impressed by what colleagues from across the country are accomplishing through their program efforts, in spite of challenges which are often common to us all. What you CAN do is attend PILD next year to learn how you can be more effective in sharing those accomplishments through methods and contexts to program funders and society as a whole.

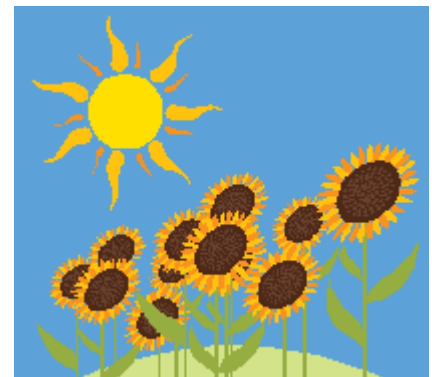
Karen Vines can be reached by email at kvines@psu.edu.

(Why Continued from page 4)

Award applications are due each year on March 1. All of the award applications are then provided to each chapter President to vote on the specific award winners. Those ballots are due back to the national office on May 15 (Hope everyone got their voting in!). The website has lots of information on the awards and application process.

So, think ahead for next year – who can you "catch doing something great"? And please attend the Galaxy IV conference where all of the awardees will be recognized. See you in Pittsburgh!

Beth Claypoole can be reached by email at eac9@cornell.edu.



Life Member Corner



Don't Pass Up an Opportunity...

Deborah Thomason, Public Issues and Life Member Committee Member

This time of year, many of our Extension colleagues are preparing to take that giant step into the “world of retirement.” What better time to enthusiastically approach them about ESP Life Membership! Better yet, if your state association presents gifts to retirees – why not make it a contribution to helping pay their ESP Life Member dues ... that is truly a gift that keeps on giving!!!

You may ask what does this have to do with Public Issues??? Well, it has been my observation in the past that MANY of our retired colleagues soon migrate to the world of public service in local, county, and state elected/appointed public service positions. A logical transition considering how well we train our Extension professionals and the many networking opportunities

we have during our careers. These well-trained, skilled and knowledgeable citizens can contribute to their local communities by their continued involvement and participation in local public issues/concerns. These former employees still have so much to offer and are now in a position where they can advocate more effectively.

Local chapters can capitalize on these resources when considering the public issues and concerns that are impacting local Extension programs and activities. So, don't pass up an opportunity to engage an ESP Life Member in chapter/local/state Public Issues ... It is a “Win – WIN” for all!

Deborah Thomason can be reached by email at dthmsn@clermson.edu

Life Member Rebates Available for Galaxy IV Conference!

Remember that we offer a \$100 stipend to the first 20 life members that register for a full time registration for the National Conference/Galaxy IV Conference—that will help defray the cost of attending considerably, so register early to insure that you receive a Life Member Rebate! If you need assistance in registering please contact Penn State who are handling the registration of Galaxy IV. If you have questions at any time during the registration process, please call 1-877-778-2937 for assistance.



Why Become a Life Member of ESP?

Patricia Powley, Life Member

“Why become a Life Member of Epsilon Sigma Phi?” has such an easy answer (among many) for me. I guess first-of-all, there are no dues to pay ever again. But if I'm retired, I'd still not have dues to pay if I never joined. Ah, there's the question to answer – why do I still want to be involved?

I have always enjoyed my membership in ESP from the very beginning. I learned so much as a part of a larger family of educators than my membership in NEAFCS which was more subject related. So, from that aspect, getting to know

others in all fields of Cooperative Extension was extremely rewarding. I got involved on committees and eventually became National President. That, in itself, brings memories and experiences that I will never forget. That was a growing experience for me. Did you know that you can still be involved on committees as a Life Member? Indeed, you can and you even get a stipend when you attend the annual conference and attend your committee meetings. It's still so wonderful to work with the current educators and with other Life Members. Oh, did I mention that attending the annual

meetings has been fantastic; the information presented can always be used in some way; it's a way for lifelong learning, and who doesn't need that? I became a Life Member to also give back in some way to an organization that has enriched my life over the years. Helping each year to give and encourage members to give to the endowment fund has been lots of fun.

Please consider becoming a Life Member. You will never regret the decision!!

Patricia Powley can be reached by email at plpowley@gmail.com.



Epsilon Sigma Phi National Office

450 Falls Avenue Suite 106

Twin Falls, ID 83301

**Galaxy IV
Conference Edition!!**

Important Dates Ahead – Mark Your Calendar!

JUNE

- Early Bird Registration Available for Galaxy IV Conference

JULY

- Deadline for 2nd Vice President (Western Region) Submissions to National ESP Office
- July 21, Deadline for ESP Connection Articles to National ESP Office
- Registration Available for Galaxy IV Conference

AUGUST

- August 1, Deadline for Electronic Submissions of Voting Delegates for 2013 National Council Meeting
- Collect Final Payments of 2013 ESP Membership Dues
- Registration Available for Galaxy IV Conference

(Registration Continued from page 1)

The following is a list of ESP events during the conference:

Monday, September 16

- ESP National Board – Pre Conference Board Meeting - 8:00am – 5:00pm

Tuesday, September 17

- ESP Regional Meetings - 8:00am – 10:00am

Wednesday, September 18

- ESP Ruby Lecture – 10:45am – 11:30am
- ESP Recognition Luncheon – 12:00pm – 1:30pm
- ESP Discussion with the Administrators – 4:30pm – 5:30pm

Thursday, September 19

- ESP Past National Presidents Breakfast – 7:00am – 8:00am
- ESP National Council Meeting - 9:00am - 11:00am
- ESP/NACAA Super Seminar 9:00am – 11:00am

Friday, September 20

- ESP National Board – Post Conference Board Meeting - 1:00pm – 5:00pm