



Texas ESP Connection 2012

Quarterly Newsletter

January - March

July - September

April - June

October - December

ESP Texas Connection Is Now on
our new Website <http://www.texasesp.org>

Upcoming Events and Deadlines

State:

*District Meritorious Service
Awards - per District*

National:

*Regional & National Officer
Applications - July 1st*

*Administrator Leaders
Scholarship - July 1st*

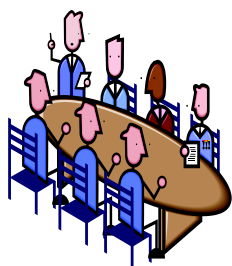
*Professional Development
Mini Grant - Aug 1st*

Greetings

I hope your Summer has started off with a BIG BANG! The Board and Committees have been working hard getting programs and awards together for this summer State Conferences. Don't forget about the State and National Deadlines that are coming up.

On behalf of the Board, Committees and District Representatives, we want to wish a relaxing entertaining summer. Enjoy time with your family, a good book and some fantastic cook outs because that's what summer is all about.

*Lindy Tefteller
ESP State Alpha Zeta Chapter President
Midland County*



Spring Board Meeting 2012

The board was very busy at the Spring Board meeting this year. We discussed the empty District 3 & 5 Directions positions, judged the National Southern Region Award Recognition. (see below positions and recipients) and adopted our 2012 Budget. At this meeting we fine tuned our State ESP Program Going for the Goal:

How to make your award application stand out, reviewed JCEP & PILD Conferences and secured ESP representatives to present our State Awards at TCAAA, TEAFCS, 4H and Specialist Conferences in July and August. Billy Warrick and Lindy Tefteller will be presenting Professional Development programs this year at the State 4H and Specialist Associations Conferences. After conferences, the programs will be on our website for ESP members to utilize in their county, district, and region.

ESP National Award Recipients - District 9 Shines

At the Spring Board Meeting, applications were judged for the 2012 National Southern Region Awards. It was a great year for judging with outstanding applications to review. 8 from Texas were submitted for National recognition. These recipients will be recognized at the national Conference being held in October in Mobile Alabama:

Administrative Leadership Recognition

Vincent Mannino, D9, Fort Bend County

Distinguished Service Recognition

Elizabeth Trejo, D9, Harris County



National ESP Scholarship 2012:

I was humbly awarded the one of 4 Public Issues Leadership Development Conference Scholarships from the National Board. Below is the article written in the National ESP newsletter regarding my journey.

What PILD Meant to Me

By: Lindy Tefteller, CEA-FCS

President, Texas Alpha Zeta chapter of Epsilon Sigma Phi

With all the changes, internal and external with in Extension, it has been an emotional roll coaster ride for us all not knowing the security of your employment. Typically I have expectations of a conference; however, with this journey I left Midland with no specific expectations so that I would be open to whatever lay ahead.



For me, PILD was a definite eye opener. It brought light to two main areas in my work development, telling the Extension story and combining the two. First main area is the Farm Bill and learning more about how it impacts Texas, Extension and my programs. From this conference, this summer's 4H newsletters will be a series on the Farm Bill and educating the public on the percent that the farm bill affects the farmers because sometimes we think we know but really don't. We all provide "end of the year" program summaries which are intended for stakeholders. Although our state summaries a substantial and provide information regarding the Farm Bill but it doesn't spell it out. Sometimes we forget or don't know to keep it simple. Including a simple tag line, catching the reader, specially our State / Federal Representatives on the work that we do is providing education in response to the Farm Bill.

The second main idea came from one of the speakers. Dr. Marshall Stewart from North Carolina State University emphasized to have your "elevator story" ready. Health, Education and Economics cover every part of Extension where you are an agent, specialist or administrator. To know who you are before you get on that evaluator because you never know who will be in there with you. Our story doesn't change its how we deliver it to that individual. As agents, we have programs that address each of this in a unique way only Extension can. As legislators, those are issues their constituents care about and will help them get re-elected.

I agree with the comment about "hearing Extension is the best kept secret". Let's stop hiding behind that comment and go tell our story. Psychology 101, we need to stop trying to change others perceptions and change how we deliver our message. In that change, Extension will no longer be that secret but will be known for Health, Education, and Economics and not just "food, horses or plants".

2012 National ESP Conference - Plan Now To Attend

*From humble beginnings to
meeting future needs:*

The Vision Continues



National
Conference
Mobile
October 7-10, 2012

The Alabama Host State planning committee has been working diligently to prepare for the 2012 ESP National Conference which will be held in Mobile, Alabama, October 7-10, 2012. Our hosts have identified three tours that will be available for those who are in Mobile on Sunday, October 7th. Following the successful Life Member tour offered in Syracuse last year, there will again be a Life Member Tour on Tuesday afternoon.

There will also be a Life Member hospitality room during the conference where Life Members will be able to gather and visit.

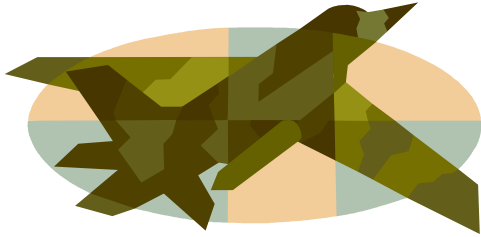
There will be great professional development opportunities at this year's conference. After getting off to a slow start the number of proposals for Concurrent Sessions and Poster Sessions resulted in 52 submissions. Looking through the proposals and seeing the initial evaluations of the proposals there are many excellent proposals. The committee is going to have a difficult time selecting those that will be presenting and the conference.

There are three exceptional keynote speakers that will address the origins of Extension work, what the future holds and an inspirational speaker that is sure to get everyone enthused to go back home and attack the challenges of meeting the needs of our clientele. The prestigious Ruby Lecture is always a special part of the program at National Conference and this year's candidates are sure to keep up the tradition of excellent presentations.

The conference will kick off with everyone going to the Battleship Memorial Park, which is home to the USS Alabama and to a museum which contains a number of interesting displays. The reception will be the site for the "Low Country Boil" dinner which is sure to be a hit.

The 2012 Conference Website is now available for registration: as we will be providing additional information as it becomes available.

<http://espnational.org/>



National Board - A Few Good Leaders

Needed, "A Few Good Leaders!" It is that time of the year that we are once again looking for a **National 2nd Vice President** for Epsilon Sigma Phi. Deborah Thomason will be leaving the Board after the National Conference in Mobile. We are seeking nominations for good candidates to replace her. If you are interested please follow the link to [2nd Vice President Nominations](#). The nomination/application is simple and the only other material needed to apply is a Letter of Support from your Chapter President and your Extension Director. Remember all materials must be submitted by July 1st. If no applications are received there can be nominations from the floor, but the nominee must have all of the applications/credentials completed and presented at the meeting.

In addition to the 2nd Vice President, all four regions will also be electing new **Regional Vice Presidents** at the meeting. Follow the link to the [Regional VP Nomination/Application Forms](#). The same July 1st deadline applies for the Regional VP's.

Register Now for the 2012 ESP National Conference which will be held October 7-10, 2012 in Mobile. Get your rooms as soon as possible - with the Bayfest Event the weekend before, there are not many rooms available on Sunday and Saturday is pretty well filled up. The Alpha Pi Chapter is looking for to hosting all of our members at an outstanding conference. ([Registration](#))

Deadlines to Remember:

1. Administrator / Leader Scholarships 7/1/2012 ([Applications](#))
2. Officer Nomination Forms Due 7/1/2012 ([Applications](#))
3. Early Bird Registration for ESP National Conference ([Registration](#))
4. Extended Deadline for Mini Grant Applications 8/1/2012 ([Application](#))
5. Registration of Conference Delegates by Chapters

Important Dates:



NESP - National ESP Conference - October 7-10, 2012 in Mobile, Alabama
Dr. Smith's Retirement Party - August 17th, 2012 College Station
Galaxy IV 2013 - September 15-19, 2013 in Pittsburg, PA

Billy's Corner - Life Members & Retirees Representative

Can you retire from Extension? Absolutely. I have my blood family, church family, new involvements, activities, events and travels that fill the gap. However, I would be short changing myself to stay away from Extension. So I don't. Maintaining contact is more difficult, but not impossible. Epsilon Sigma Phi allows me the opportunity to keep in contact with friends and to meet new people across the United States. There is no doubt that Extension has changed. The number of people wanting part of the tax dollars has increased, state populations have increased, demand for Extension programming has increased; while funding and staff has decreased. More than ever Extension employees have to apply the successful programs developed by others. What better way to share what you know and learn what others have developed than through the Extension Elite that make up the membership of Epsilon Sigma Phi. As a retiree I contribute where I can; a word of sincere encouragement, a knowing ear, and respect for the people doing the job of today's Extension is valuable and worth our investment of time and resources.



Currently under discussion are study tours in:

Costa Rica - SEE BELOW DETAILS

Tentative dates: February 14 - 28, 2013

Japan

Tentative dates: May 9 - 23, 2013

Poland

Tentative dates: October 17 - 30, 2013

Australia

Tentative dates: Mid - Late January, 2014



For more information contact Dan James at djworld04@sbcglobal.net

**COSTA RICA
PURA VIDA
INTERNATIONAL STUDY TOUR**

DATES:

February, 13 – 27, 2013

PROGRAM HIGHLIGHTS:

National Biodiversity Institute
Meet with Agriculture office – U.S. Embassy
Short Host Family stay
Visit a local school and stay at CATIE and Earth Universities
Coffee production systems
Meet with a cooperative or women owned business
Visit a pineapple plantation, the coast, rainforest and volcano national park
Boat ride to view wildlife

PARTICIPATION:

The program is limited to approximately 20 adults. First come first served.

PROGRAM COST (Estimated):

Fee covers round trip airfare from D/FW to San Jose, in-country transportation, lodging, entrance fees, native guide, academic coordination, instructors, activities, materials/equipment and most meals.

Double occupancy – \$2595.00

Single occupancy - \$2795.00

Airfare will determine final program cost

CONTACT:

For more information contact:

Dan James

Professor and Extension Specialist Emeritus

Director Global Connections

E-mail: djworld04@sbcglobal.net

Phone: 214-766-6323

April - June 2012